

Better on Every Level



Preparation Guidance



Construction Notes

All works must be completed prior to the commencement of lift installation. Failure to do so will result in additional costs being chargeable.

Most installations will require the construction of a pit which must be prepared to the exact dimensions provided. It shall be excavated and finished with smooth and totally level surfaces. If external or liable to flood it will require drainage. A 60mm diameter duct is required for the lift's services. The location of the duct is important so please contact us for details of its exact location. All debris and standing water must be removed from the pit prior to installation. The pit must be capable of supporting the full weight of the lift and its load plus an overload factor. The lift will be secured using self-anchoring fixings of approx. 100mm-150mm in length.

The upper level gate threshold must be capable of supporting a 600Kg push/pull dynamic force distributed over the full surface area. The travel zone fascia must be 100% true and vertical and it must be smooth. The fascia to threshold must be a true 90 degrees. The upper level gate will be affixed with a series of 100-150mm self-anchoring fixings — the substrate must be suitable to accept these fixings. Please provide details of your substrate prior to installation to ensure the correct fixings are used.

Assistance with off loading and positioning of the lift may be required.

There must be clear and unobstructed access to the point of installation at all times.

A secure area shall be available adjacent to the installation for tools and equipment storage.

The builder shall provide hoarding or barriers to protect the upper level prior to gate fitting.

Welfare facilities must be provided including first aid. It is the builder's responsibility to ensure health and safety measures are in place and maintained.

Suitable lighting must be provided.

240v power must be provided for power tools.

Delivery, Offloading and Initial Positioning

Depending on the actual contract arrangements (which will be detailed in our quotation and the Order Acknowledgement), the delivery, offloading and initial positioning arrangements can vary but will generally fall within the following categories;

The customer is responsible for offloading and initial positioning

In this case, the lift will normally be delivered by conventional transport – ie a curtain-sided flat-bed vehicle and will require a fork-lift truck, or similar, of suitable capacity to offload (all our lifts are supplied with their own pallet type base). Once offloaded, it is the customer's responsibility to position the lift using manpower or mechanical means as appropriate to the site. By arrangement, our installation engineers can attend to oversee this process.

Tail-lift or HIAB vehicles can be provided where appropriate and necessary subject to cost agreement.

Edmolift is responsible for the complete process.

In this case, the means of delivery and offloading will be arranged by us. A HIAB vehicle will be used where appropriate – particularly where it is possible to position the unit from the offloading point.

It is the customer's responsibility to ensure that there is appropriate access for the delivery vehicle and that the route to the pit or floor area where the lift is to be installed is clear of all obstacles.

For either option, it is important that any special requirements for delivery bookings are made known to us at an early stage. It is also important to note that we do not include for parking bay suspensions, road closures or any other local authority requirements.

Specific details will be recorded in the Method Statement.

Electrical Information

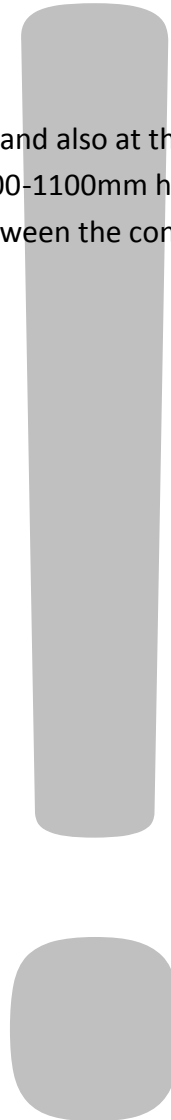
A dedicated three phase 415v 10-32 amp or 220/240v single phase 16 amp rotary isolator is required at point of power pack location—see proposal/order acknowledgement for confirming details, which must be live prior to commencement of installation and be fused and lockable.

Power pack and electrical panel

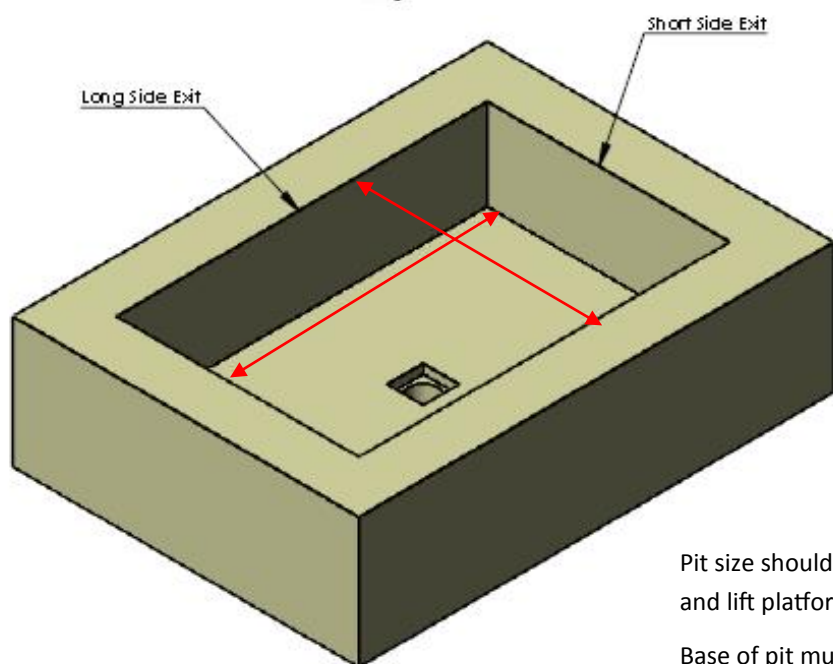
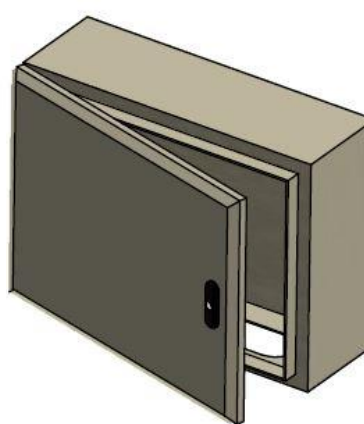
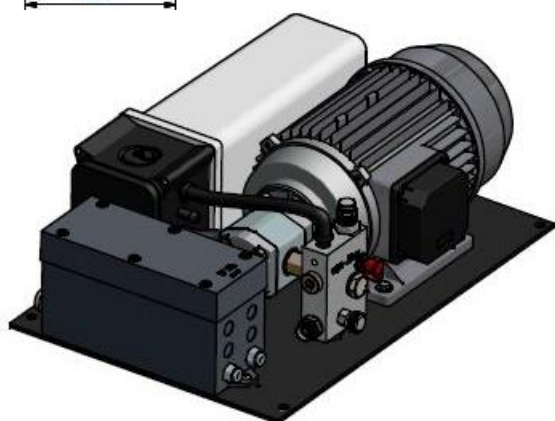
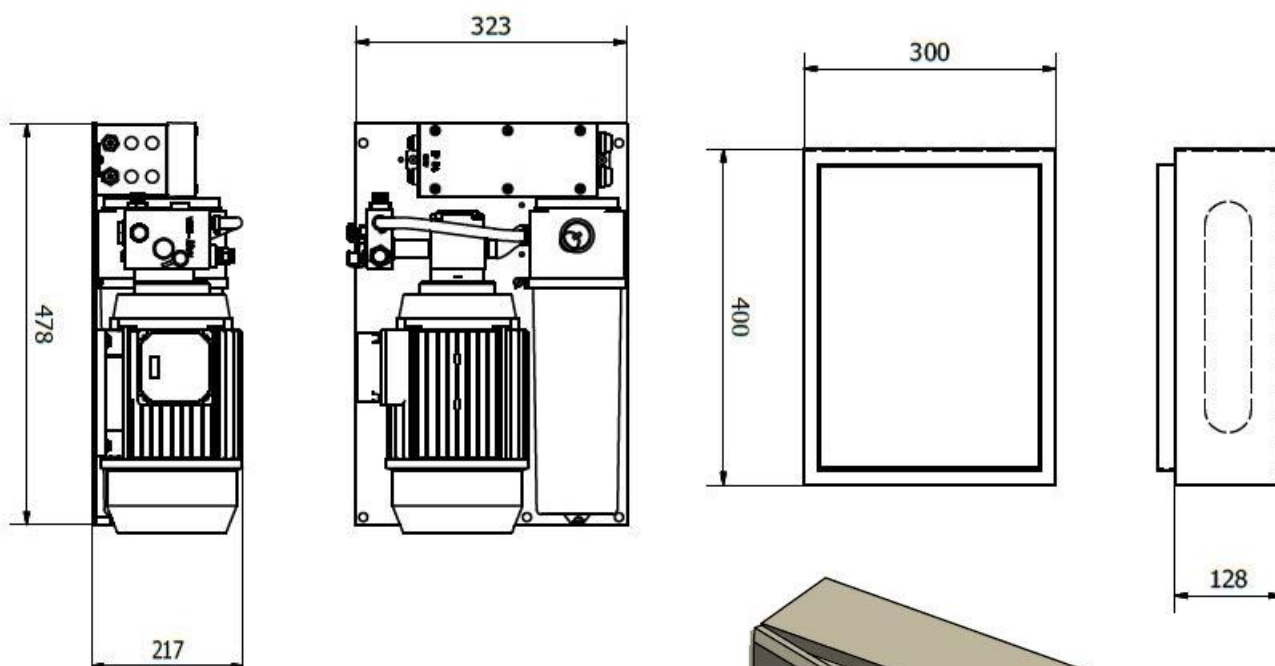
Provision must be made to locate the power pack and electrical control panel in a dry, weather proof area. The power pack is normally floor mounted and the electrical panel is wall mounted. The location must be no further than 6M from the lift with suitable space to work around the power pack and electrical panel for initial installation and ongoing maintenance. Lighting must be provided. The power pack must be easily accessible.

Push button control stations

Generally a control station is located in the upper level gate slam post and also at the lower level. Provision must be made for the lower control which must be located in a 900-1100mm height range. The builder must provide both controls with a 25mm diameter conduit between the control and the power pack location with a pull cord.



Typical power pack and electrical control cabinet configuration, other sizes are available and may be used for your installation, please check for size details, DO NOT assume that sizing is as per the diagram below.



Pit with drainage. A 60mm diameter services duct must be provided.
Contact us for details of location

Pit size should be lift platform length + 30mm
and lift platform width + 30mm

Base of pit must be flat and level, pit walls must
be smooth and level and at 90 degrees to pit
base

Pit size and other considerations

Pit length = platform length + 30mm

Pit width = platform width + 30mm

Pit depth = lifts closed height (allow for platform tray if required)

Ensure that drainage is included for external applications or liable to flood (inc. floor cleaning etc)

60mm diameter services duct. Contact us for details of exact location.

25mm diameter ducts for control stations

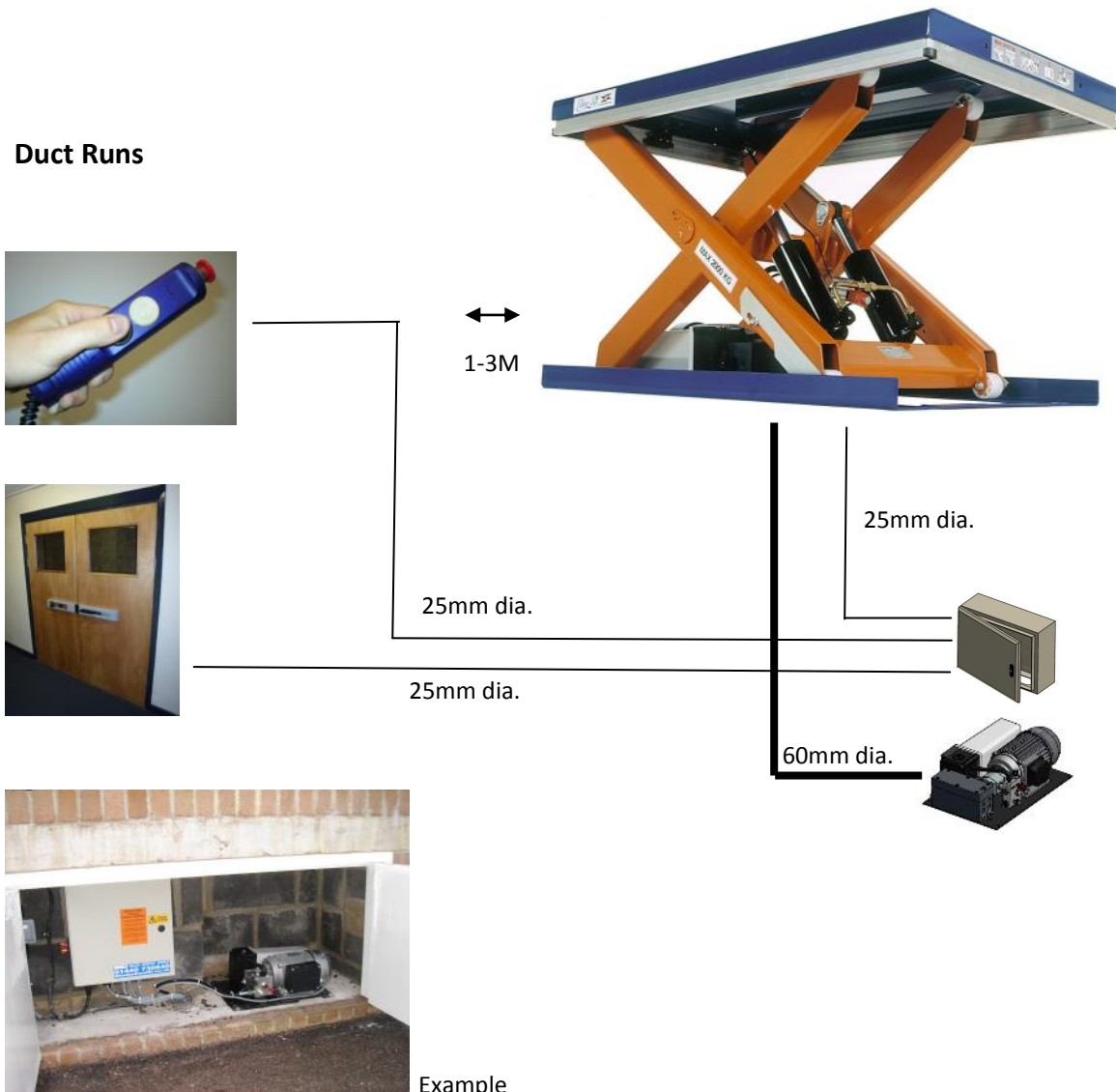
Provision for upper level gate inc. loadings

The builder is responsible for suitably protecting floor and wall surfaces to prevent damage during positioning and installation.

Most lifts are off loaded using a crane equipped vehicle. It is the builder's responsibility to ensure we have sufficient roadside space available. Parking bay suspensions, road closures and permits are the builder's responsibility. Overhead removal of cables is also the builder's responsibility.

Site must be fully prepared prior to installation. Failure to prepare the site correctly may result in additional costs being chargeable

Duct Runs



PRE-INSTALL SITE PREPARATION

Are You Ready?

Your lift will shortly be delivered and installed. In order to avoid delays and difficulties it is essential that all works, in accordance with the contract, are completed prior to delivery and commencement of lift installation. .

Delivery has been arranged as agreed.

We have compiled the following check list to assist you when preparing for the lift installation, failure to prepare correctly can result in additional costs being payable by you.

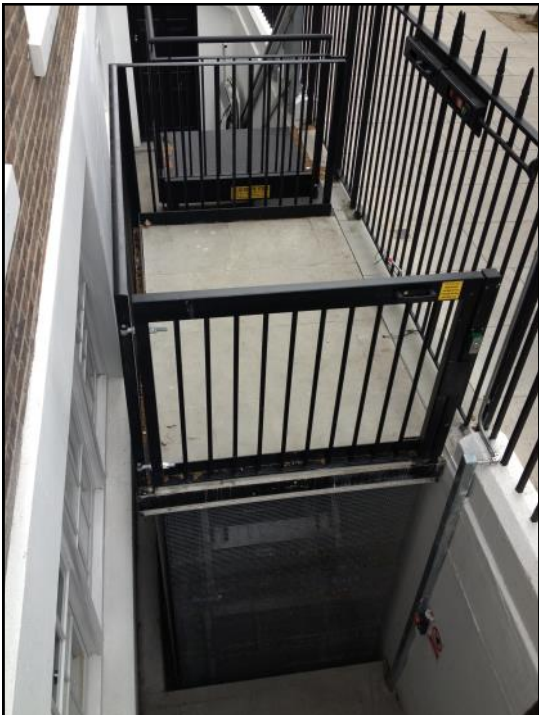
Please ask if advice is required.

It is essential that you comply fully with these requirements, failure to do so will result in additional costs being payable by you.

Site Requirements	Check
Clear and unobstructed access to site and the point of installation at all times*	
Suitable parking space including parking bay suspension, road closures and permits, if applicable.	
Details supplied to Edmolift/Lyfthaus of any site inductions required before work commencement**	
Site work is completed in accordance with our drawings or agreed drawings.	
A secure area is available adjacent to the installation for tools and equipment storage.	
The pit has been prepared to the exact dimensions provided. It is excavated and finished with smooth and totally level surfaces. If external or liable to flood it has suitable drainage. The pit must be free from moisture and debris	
An appropriate 60mm diameter with pull cord, suitably located duct for the lift's services is in place and that 25mm diameter ducts with pull cords are in place for the control stations and any interlocks or switch gear that may have been specified	
Welfare facilities are in place. It is the customer's responsibility to ensure health and safety measures are in place and maintained.	
Live 220/240v power is provided for power tools	
3 phase + earth electrical supply (or single phase 240v depending on your chosen supply), wired to an isolator no further than 3 metres from the location of the installation and available throughout the installation. The electrical output supply is compliant with current I.E.E. Regulations.	
Fixing locations for all gates and barriers plus entrance and exit points must be smooth and level and of sufficient strength to accept the gate/barrier loadings and their fixings.	
If the location is tanked (waterproof membrane) it must be at a sufficient depth to allow for our fixings	
All surfaces must have sufficient protection to allow for positioning of the lift	

* A timeframe of up to two hours has been allocated and costed for vehicle off-loading

** A timeframe of up to one hour has been allocated and costed for site induction



Better on Every Level

Edmolift UK Ltd Steeple Bumpstead England CB9 7BN

Tel: 01440 730640 lifts@edmolift.co.uk

www.edmolift.co.uk